

ATMOSPHERE, INTERIOR, AND EVOLUTION OF THE METAL-RICH TRANSITING PLANET HD 149026b

J. J. FORTNEY,¹ D. SAUMON,² M. S. MARLEY,¹ K. LODDERS,³ AND R. S. FREEDMAN^{1,4}

Received 2005 July 15; accepted 2005 December 31

ABSTRACT

We investigate the atmosphere and interior of the new transiting planet HD 149026b, which appears to be very rich in heavy elements. We first compute model atmospheres at metallicities ranging from solar to 10 times solar and show how for cases with high metallicity or inefficient redistribution of energy from the dayside, the planet may develop a hot stratosphere due to absorption of stellar flux by TiO and VO. The spectra predicted by these models are very different than cooler atmosphere models without stratospheres. The spectral effects are potentially detectable with the *Spitzer Space Telescope*. In addition, the models with hot stratospheres lead to a large limb brightening, rather than darkening. We compare the atmosphere of HD 149026b to other well-known transiting planets, including the recently discovered HD 189733b, which we show has a planet-to-star flux ratio twice that of HD 209458 and TrES-1. The methane abundance in the atmosphere of HD 189733b is a sensitive indicator of atmospheric temperature and metallicity and can be constrained with *Spitzer* IRAC observations. We then turn to interior studies of HD 149026b and use a grid of self-consistent model atmospheres and high-pressure equations of state for all components to compute thermal evolution models of the planet. We estimate that the mass of heavy elements within the planet is in the range of 60–93 M_{\oplus} . Finally, we discuss trends in the radii of transiting planets with metallicity in light of this new member of the class.

Subject headings: binaries: eclipsing — planetary systems — radiative transfer — stars: individual (HD 149026, HD 189733)

1. INTRODUCTION

Searches for extrasolar giant planets (EGPs) over the past 10 years have yielded a bizarre menagerie of planets, many of which are in orbits with periods of only a few days. These “hot Jupiters,” or “Pegasi planets,” which orbit within ~ 0.1 AU of their parent stars, form a class of astrophysical objects that is still yielding surprises. The latest, and perhaps most unanticipated, is HD 149026b, a planet in a 2.87 day orbit around a metal-rich G0 IV parent star. This planet was discovered by the radial velocity method and subsequently shown to transit its parent star (Sato et al. 2005). The most striking feature of planet HD 149026b is its small radius of only $0.725R_J \pm 0.05R_J$, given its mass of $0.36M_J \pm 0.03M_J$ ($114 M_{\oplus}$). For comparison, Saturn has a mass of $0.30M_J$ ($95 M_{\oplus}$), is about 2.5 Gyr older than HD 149026b, and receives 140,000 times less stellar flux, and yet has a mean radius of $0.81R_J$. The transiting planet most similar in mass to HD 149026b, OGLE-Tr-111b, has a mass of $0.53M_J$ and a radius of $\sim 1R_J$ (Pont et al. 2004).

Evolution models of solar composition Pegasi planets have shown that lower mass giant planets should be preferentially influenced by irradiation, leading to larger radii (Guillot et al. 1996), but HD 149026b is decidedly small. Recent interior structure models of Saturn show that it globally possesses $20 \pm 8 M_{\oplus}$ of heavy elements (including the core) for a corresponding sixfold to 14-fold global enhancement in “metals” relative to the Sun (Saumon & Guillot 2004). The small radius of HD 149026b implies that it has even more heavy elements in its interior. Indeed, Sato et al. (2005) have estimated a core mass near $70 M_{\oplus}$, or 60% of the planet’s mass! The high metallicity of the parent star $[Fe/H] = 0.36 \pm 0.05$ (Sato et al. 2005) suggests that this

system is very favorable to planet formation as the current fraction of stars with detected planets increases strongly with stellar metallicity (Gonzalez 1997; Santos et al. 2004; Fischer & Valenti 2005).

While the planet’s orbital radius of 0.042 AU is similar to that of the well-known transiting planet HD 209458b, the luminosity of the star HD 149026 is larger ($2.7 L_{\odot}$), and the degree of irradiation is intermediate between those of well-known transiting planets OGLE-Tr-56b ($T_{\text{eff}} \sim 1950$ K) and HD 209458b ($T_{\text{eff}} \sim 1450$ K). We show that the atmosphere of HD 149026b could be substantially different from that of HD 209458b and TrES-1, which were recently detected in the infrared with the *Spitzer Space Telescope* (Deming et al. 2005; Charbonneau et al. 2005). As the HD 149026 system is relatively bright ($V = 8.15$), it is an enticing target for follow-up *Spitzer* observations.

In this paper we investigate atmosphere models for the planet and show how under certain circumstances the atmosphere may feature a hot stratosphere driven by absorption of stellar flux by TiO and VO at millibar pressures. We provide model planet-to-star flux density ratios in *Spitzer* Infrared Array Camera (IRAC) and Multiband Imaging Photometer for *Spitzer* (MIPS) bandpasses that will allow for a determination of the character of the planet’s atmosphere. We briefly discuss the atmospheres of all potential *Spitzer* secondary eclipse targets, including the newly discovered HD 189733b (Bouchy et al. 2005). We also investigate the evolutionary history of HD 149026b with the help of a new grid of model atmospheres computed specifically for this planet. This atmosphere grid, applied to a planetary evolution code, with high-pressure equations of state of H/He mixtures, rock, and ice, allows us to place constraints on the abundances of heavy elements in HD 149026b, and to begin to understand its current structure.

2. MODEL ATMOSPHERES

2.1. Methods

Atmospheric pressure-temperature (P - T) profiles and spectra for the planet were obtained with a plane-parallel model atmosphere code that has been used for a variety of planetary and

¹ Space Science and Astrobiology Division, NASA Ames Research Center, MS 245-3, Moffett Field, CA 94035; jfortney@arc.nasa.gov.

² Los Alamos National Laboratory, MS P365, Los Alamos, NM 87545.

³ Planetary Chemistry Laboratory, Department of Earth and Planetary Sciences, Washington University, St. Louis, MO 63130.

⁴ SETI Institute, 515 North Whisman Road, Mountain View, CA 94043.

substellar objects. The code was first used to generate profiles and spectra for Titan’s atmosphere by McKay et al. (1989). It was significantly revised to model the atmospheres of brown dwarfs (Marley et al. 1996, 2002; Burrows et al. 1997), Uranus (Marley & McKay 1999), cool EGP’s (Marley 1998), and Pegasi planets (Fortney et al. 2005). It explicitly includes both incident radiation from the parent star and thermal radiation from the planet’s atmosphere and interior. The basic radiative transfer solving scheme was developed by Toon et al. (1989). We use the elemental abundance data of Lodders (2003) and compute chemical equilibrium compositions with the CONDOR code, following Fegley & Lodders (1994), Lodders & Fegley (2002), and Lodders (2002). Recently, Visscher & Fegley (2005) have shown that while photochemical reactions will likely be important in Pegasi planet atmospheres at low pressure, chemical equilibrium abundances hold at pressures greater than ~ 10 mbar. For the most part, the infrared spectra of Pegasi planets are sensitive to opacity at $10 \lesssim P \lesssim 100$ mbar (Fortney et al. 2005), so equilibrium chemistry calculations are probably sufficient. This may need to be revisited as more observational data become available.

In addition, we maintain a large and constantly updated opacity database. Our data set includes the molecular bands of H_2O , CH_4 , CH_3D , CO , NH_3 , H_2S , PH_3 , TiO , VO , CrH , FeH , CO_2 , HCN , C_2H_2 , C_2H_4 , and C_2H_6 complemented with the atomic lines of the alkali metals (Li, Na, K, Rb, and Cs) from Burrows et al. (2000) and continuum opacity sources from H_2 CIA, H_2 , H and He Rayleigh scattering, H^- bound-free and free-free, H_2^- free-free, He^- free-free, and H_2^+ bound-free and free-free (R. S. Freedman & K. Lodders 2006, in preparation).

We predict all cloud properties using the model of Ackerman & Marley (2001), which is directly coupled to the radiative transfer solver. The model parameterizes the efficiency of sedimentation of cloud particles through an efficiency factor, f_{sed} . Large values of f_{sed} correspond to rapid particle growth and large mean particle sizes. In this case condensates quickly settle out of the atmosphere, leading to physically and optically thin clouds. When f_{sed} is small, cloud particles grow more slowly, the atmospheric condensate load is larger, and the clouds are both physically and optically thicker. Here we use a sedimentation efficiency parameter $f_{\text{sed}} = 3$, which fits spectral observations of cloudy L-dwarfs (Marley et al. 2002). This choice generally confines 90% of the optical depth of a cloud within 1 scale height of the cloud base. While a large number of condensates are included in the calculation of the chemical equilibrium, the cloud model here accounts for the major condensates Fe and Mg-silicates (here represented by Mg_2SiO_4). Further details on our methods can be found in Marley et al. (2002) and M. S. Marley et al. (2006, in preparation).

We model the impinging stellar flux from 0.26 to $10.0 \mu\text{m}$ and the emitted thermal flux from 0.26 to $325 \mu\text{m}$. All the relevant planetary and stellar parameters for HD 149026b are taken from Sato et al. (2005). The incident stellar flux from HD 149026 is from a model spectrum by Kurucz (1993) with $T_{\text{eff}} = 6200$ K interpolated in gravity to $\log g = 4.26$. The luminosity of the final stellar model matches the Sato et al. (2005) derivation of $2.7 L_{\odot}$. The planet’s radiative-convective P - T profile is arrived at iteratively until the net flux is conserved to at least one part in 10^6 in each layer. Our model atmosphere code computes the P - T profile and a low-resolution spectrum. A high-resolution spectrum is generated from the P - T profile and a full line-by-line radiative transfer code, using the same chemistry and opacity databases and converged cloud properties.

When modeling the atmospheres of irradiated objects with a one-dimensional, plane-parallel atmosphere code, it is necessary to weigh the stellar flux F by a geometric factor given by the ratio

of the cross section area of the planet to the surface area of the emitting planetary surface. If the planet is able to reradiate the absorbed stellar energy over its entire surface (4π sr), an incident stellar flux of $F/4$ is used. This assumes a very efficient horizontal redistribution of the absorbed stellar energy over the entire atmosphere. In the other limit, redistribution is poor and the planet is only able to reradiate this flux on the dayside (2π sr) and the normalization in $F/2$. Here our standard case is $F/4$. All models shown will use $F/4$ unless they are labeled “ 2π ,” in which case $F/2$ is used. Models of the atmospheres of TrES-1 and HD 209458b are in better agreement with the *Spitzer* observations (Charbonneau et al. 2005; Deming et al. 2005) when efficient redistribution ($F/4$) is assumed (Fortney et al. 2005; Seager et al. 2005; Barman et al. 2005). This conclusion is tentative, however, and Burrows et al. (2005) argue for a value between $F/4$ and $F/2$. An intermediate value (although closer to $F/4$) is supported by the most recent dynamical models for HD 209458b (Cooper & Showman 2005b) that predict a temperature contrast between the “hot” and “cold” sides of the planet of ~ 500 K, which may be blown by supersonic winds 60° of longitude from the substellar and antisubstellar points.

These dynamical models (e.g., Cooper & Showman 2005b; Showman & Guillot 2002) and the work of Iro et al. (2005) and Seager et al. (2005) show that these flux redistribution issues are likely to be more complex than a simple $F/4$ or $F/2$ factor. At low pressures (less than tens of millibar) the radiative time constant is short compared to likely mixing timescales, and the atmosphere should quickly adjust to the local stellar irradiation, meaning the hottest point will be the planet’s subsolar point. At higher pressures, where the atmosphere is optically thick, the radiative time constant scales roughly as the pressure squared (Iro et al. 2005). Consequently, at these larger pressures, even very slow circulation would homogenize the temperatures around the planet. At intermediate pressures, the interplay between circulation and radiation could lead to strong temperature inhomogeneities around the planet. This could lead to a P - T profile that is very similar to the $F/4$ solution at depth but is quite different at lower pressures. The potential exists for some regions of the dayside to have a hot stratosphere while others do not.

2.2. Profiles, Composition, and Energy Balance

We have computed atmospheric P - T profiles for three metallicities: $[\text{M}/\text{H}] = 0, 0.5, \text{ and } 1$. These profiles are shown in Figure 1. The solar metallicity model allows a comparison with published models of other planets, the $[\text{M}/\text{H}] = 0.5$ is close to the metallicity of the star HD 149026, and $[\text{M}/\text{H}] = 1$ represents an enrichment of ~ 4 times over the host star’s value, which is typical of the atmospheres of Jupiter and Saturn. These atmosphere models assume (1) reradiation of the absorbed stellar flux over 4π sr, (2) cloudless structures, and (3) an intrinsic temperature (the T_{eff} the planet would have in isolation) of 100 K, which we later show to be reasonable, based on thermal evolution models (§ 3.1). As the metallicity is increased, the atmosphere becomes warmer as a larger fraction of incident radiation is absorbed.

These profiles all exhibit hot stratospheres due to absorption by TiO and VO at millibar pressures. In fact, however, the P - T profiles all cross the condensation curve of Ti-bearing condensates at pressures of hundreds of bars. As discussed in Lodders (2002), the first Ti condensate will not necessarily be CaTiO_3 ; the condensation sequence is far more complicated. For solar metallicity the first condensate is TiN if $P \gtrsim 30$ bars, $\text{Ca}_3\text{Ti}_2\text{O}_7$ if $5 \lesssim P \lesssim 30$ bars, $\text{Ca}_4\text{Ti}_3\text{O}_{10}$ if $0.03 \lesssim P \lesssim 5$ bars, and CaTiO_3 if $P \lesssim 0.03$ bars. These four condensates are the *initial* condensates as function of total pressure, and their condensation temperatures

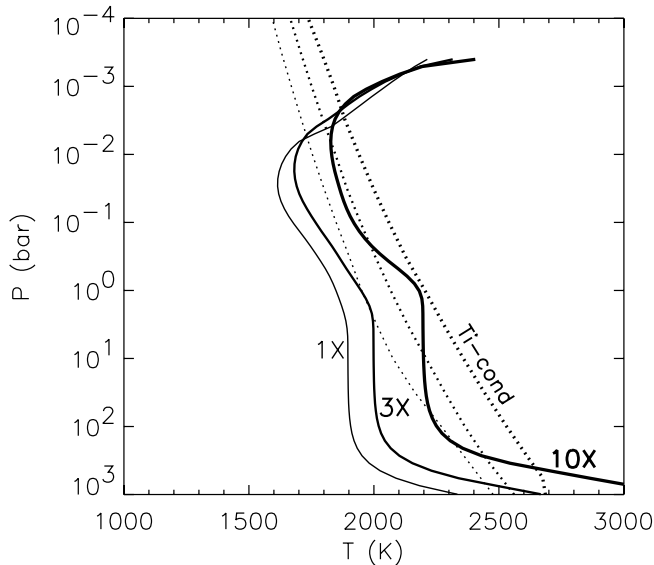


FIG. 1.— Cloud-free atmospheric P - T profiles for HD 149026b at $[M/H] = 0, 0.5,$ and 1 ($1\times, 3\times,$ and $10\times,$ respectively). The thicker the curve, the higher the metallicity. These profiles include the opacity of TiO and VO at low pressure, based on our pretabulated abundance tables, which is probably not realistic for these profiles (see text). Metallicity-dependent condensation curves for the first condensate of Ti are shown as dotted lines and labeled “Ti-cond.” Again, the thicker the curve, the higher the metallicity.

define the Ti-condensation curve in Figure 1. At higher metallicities the situation is similarly complex.

Due to mixing in the atmosphere, any gaseous TiO in the upper atmosphere is expected to eventually mix down to this condensation point, where the Ti-bearing cloud remains confined due to the planet’s gravitation field. This process, known as a “cold trap,” is responsible for the extremely low water abundance in the Earth’s stratosphere. The abundance of TiO at pressures above the cloud would be set by the vapor-solid chemical equilibria between the condensate and the TiO gas. Below we discuss problems with calculating this equilibrium for all possible P - T profiles. The profiles shown in Figure 1 are potentially unrealistic as the actual TiO abundances high in the atmosphere should be less than what we have used (see below).

The formation of a hot stratosphere arising from TiO and VO absorption at low pressures and high temperatures was pointed out for highly irradiated planetary atmospheres by Hubeny et al. (2003), and we obtain qualitatively similar results. A full discussion of titanium and vanadium chemistry in the context of low-mass dwarf stellar atmospheres can be found in Lodders (2002). Much of that discussion pertains to the atmospheres of Pegasi planets as well, but here we encounter additional issues. The cold trap phenomenon constitutes a departure from chemical equilibrium that cannot be accounted for in pretabulated chemical equilibrium abundances (Hubeny et al. 2003). Our chemical abundances and opacities are pretabulated in P - T space, and the atmosphere code interpolates in these abundances as it converges to a solution. The abundances determined for any one pressure level of the P - T profile are not cognizant of abundances of other levels of the P - T profile. In this case a tabulated TiO abundance at a given P - T point at which, in equilibrium, TiO would be in the gaseous state, may not be correct given the behavior of the profile at higher total pressures, where the profile may cross a condensation curve that would deplete the atmosphere of TiO above the cloud.

As described in Lodders (2002), gaseous VO (whose abundance is $\sim 10\%$ that of TiO) does not condense as solid VO but

instead condenses with TiO into the solid Ca-Ti-oxides. This is because V substitutes for Ti in these condensates, which condense at higher temperatures than solid VO. It is thus reasonable to use the Ca-Ti-oxides condensation curve to determine the pressures and temperatures at which TiO and VO begin to condense. We stress that in our chemical equilibrium calculations the metallicity dependence of condensation is handled appropriately for every metallicity. We suggest that the reader turn to Figures 3 and 4 in Lodders (2002), which show contours of constant TiO and VO mole fraction at a wide range of temperatures and pressures. For instance, in the solar metallicity case, the TiO mole fraction at 100 mbar drops by a factor of 100 between 1850 K, when $\text{Ca}_4\text{Ti}_3\text{O}_{10}$ condensate forms, and 1650 K, a point on our P - T profile.

Given the difficulty of treating the TiO/VO condensation issue and because this is the first study of the atmosphere of HD 149026b, we have decided to take a simpler path. Here for most of our profiles we bracket the effect that gaseous TiO and VO would have on the atmosphere. We do this by choosing two end-member cases for the TiO/VO abundances. We either leave TiO and VO in the opacity table, as dictated by the chemistry table, or we remove all TiO and VO opacity at pressures less than 10 bars. (Essentially all stellar flux is absorbed at $P < 10$ bars.) A somewhat similar approach was taken by Hubeny et al. (2003) in their models of the atmosphere of planet OGLE-TR-56b. These different assumptions give profiles that either have hot stratospheres, as shown in Figure 1, or lack these stratospheres, as discussed below. These two limiting cases likely bracket the range of possible profiles for HD 149026b. In one case we use a more complex approach. As seen in Figure 1 the $[M/H] = 1.0$ profile reaches the $[M/H] = 0.0$ condensation curve. This means that while $\sim 90\%$ of TiO condenses, 10% of the TiO (a solar abundance) will be left in the atmosphere. Therefore, we also compute a profile that uses opacities based on the following abundances: $[M/H] = 1.0$ is used for all species except TiO and VO, where abundances from the $[M/H] = 0.0$ table are used at $P < 10$ bars.

Two of the modified profiles lacking TiO and VO at low pressure are shown in Figure 2. They are for $[M/H] = 0.0$ and 0.5 and include the opacity of Mg-silicates (here as forsterite, Mg_2SiO_4) and iron (Fe) clouds. These cloudy profiles are slightly warmer at low pressures than cloudless profiles would be. Both models absorb nearly all incident stellar flux, with only 8% and 5% of this flux being scattered back to space, for $[M/H] = 0$ and 0.5 , respectively.⁵ The stellar flux is absorbed at progressively lower pressures as the metallicity is increased. We also show a $[M/H] = 0.5$ model assuming reradiation over the dayside only (2π sr). In this model, we also leave in our pretabulated TiO and VO abundances in order to create what may be a reasonable upper limit to temperatures on the dayside, for a uniform $[M/H] = 0.5$ atmosphere. We also include the $[M/H] = 1.0$ model from Figure 1 here, shown in gray. We compare that profile to the $[M/H] = 1.0$ profile with solar TiO and VO abundances in the upper atmosphere, shown in solid black. With the smaller TiO/VO abundances, the stratosphere persists but is significantly muted. We treat these profiles shown in Figure 2 as representative of the range of potential dayside P - T profile, while knowing that the actual temperature structure may be more complicated. However, since it is unlikely that the planet has a lower metallicity than the parent star ($[\text{Fe}/\text{H}] = 0.36 \pm 0.05$; Sato et al. 2005), for the remainder of the discussion we consider only the $[M/H] = 0.5$ and 1 models.

⁵ These values are not necessarily equivalent to the Bond albedo, as we are using a plane-parallel, one-dimensional model atmosphere code.

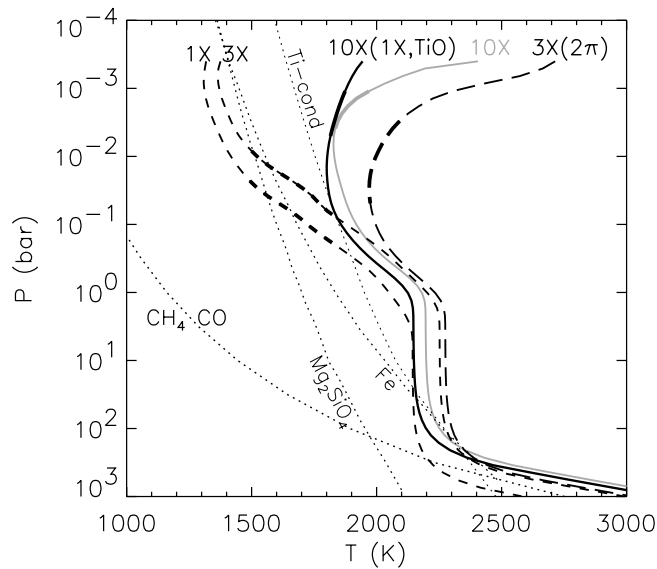


FIG. 2.—Atmospheric P - T profiles for HD 149026b. In the models with $[M/H] = 0$ (“1 \times ”) and 0.5 (“3 \times ”), the opacity of TiO and VO has been removed at pressures less than 10 bar, but the opacity of clouds of forsterite and iron is included. The $[M/H] = 1$ model in gray is the same as that shown in Fig. 1. The “3 \times (2 π)” model assumes that the absorbed stellar flux can only be reradiated on the planet’s dayside and that the chemical equilibrium TiO and VO abundances are valid at low pressure. The profile labeled “10 \times (1 \times TiO)” uses $[M/H] = 1.0$ table for all abundances except for TiO and VO, for which the $[M/H] = 0$ abundances are used. The thick part of each profile shows the extent of the brightness temperatures for each model in the 3–30 μm wavelength range. Also shown is the curve where the abundances of CH₄ and CO are equal. For clarity, all condensation and chemical boundaries are for solar composition (Lodders & Fegley 2006).

A cold trap in this P - T space will in general affect additional chemical species such as FeH and CrH, but this is of minor importance for our profiles. However, cold traps do have the potential to change the abundance of oxygen in the upper atmosphere. One could envision a cooler profile where silicates condensed at high pressure (here they do not), but then at lower pressures the temperature profiles could be warmer than the silicate condensation curves. If so, then our chemical equilibrium abundance tables would significantly overestimate the abundance of available oxygen. The Mg silicates remove 23% of oxygen in a solar composition gas, which would increase the C/O ratio in the upper atmosphere. This would lead to a decrease in the mixing ratio of H₂O and an increase in the mixing ratio of CO (Fortney et al. 2005). Such concerns may be relevant to atmospheres encountered in the future.

2.3. Spectra

The spectra of the $[M/H] = 0.5$ and 1 models are plotted in Figure 3. Like other Pegasi planets, the infrared spectrum is carved by H₂O and CO opacity. We find no spectral signatures due to CH₄, as CO is by far the dominant carbon reservoir in these hot atmospheres. Interestingly, models with hot stratospheres result in *emission* features of H₂O and CO. For example, the series of spikes in the 4.2–5.5 μm spectral region are all CO emission features. Infrared emission features have long been known in the atmospheres of our solar system’s giant planets. All four planets possess a hot stratosphere and show a CH₄ emission feature at the molecule’s strong 7.8 μm band. Photochemically produced ethane and acetylene also exhibit emission in some giant planet atmospheres. For CH₄, only the 7.8 μm band is seen in emission because it is the strongest band, and it forms highest

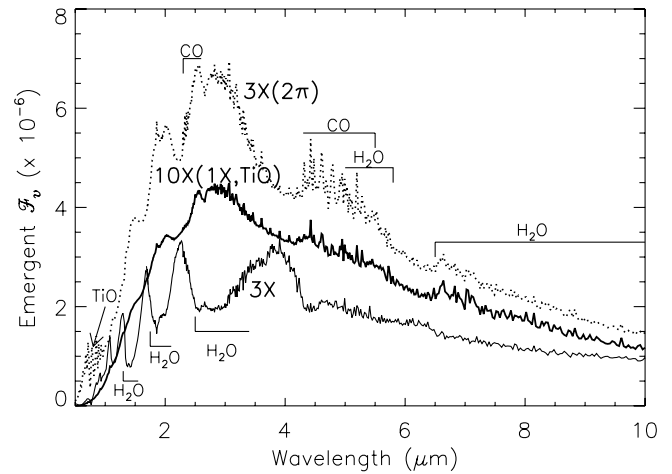


FIG. 3.—Emergent infrared spectra for HD 149026b at $[M/H] = 0.5$ (labeled 3 \times), $[M/H] = 1.0$ with TiO/VO reduced to solar [labeled 10 \times (1 \times ,TiO)], and $[M/H] = 0.5$ with 2 π sr reradiation (labeled 3 \times (2 π)). The flux is in $\text{ergs s}^{-1} \text{cm}^{-2} \text{Hz}^{-1}$. Many features seen in absorption in the $[M/H] = 0.5$ model can be seen in emission in the other models. Most prominent are the H₂O and CO features in the infrared. TiO can be seen in emission in the optical in the $[M/H] = 0.5$ 2 π model, whereas the $[M/H] = 0.5$ model has strong absorption due to Na and K in the optical.

in atmosphere—in this case, above the temperature inversion. For HD 149026b models with the hottest stratospheres, emission due to TiO and VO is also seen in the optical, whereas in the $[M/H] = 0.5$ model the optical spectrum is carved by strong absorption by Na and K. We plot our planet-to-star flux density ratios in Figure 4 and show the wavelength ranges of the four IRAC bands and the MIPS 24 μm band. The models with stratospheres are redder from 4 to 20 μm than models without stratospheres, due to emission by CO and H₂O, which can be seen most strongly in IRAC 4.5, 5.8, and 8.0 μm bands. Comparing photometry in these IRAC bands to the 3.6 μm band will be the most clear signature of a stratosphere for this planet, as well as other transiting planets.

Table 1 collects our band-averaged planet-to-star flux density ratios in the *Spitzer* IRAC and MIPS bands. Due to the combination of the planet’s small radius and the large luminosity of the

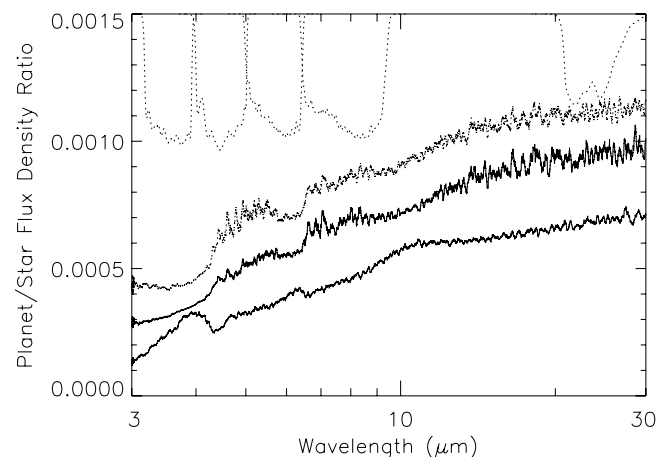


FIG. 4.—Planet-to-star flux density ratios for the three HD 149026b planet models shown in Fig. 3. The lower black curve is the cloudy model with $[M/H] = 0.5$. The upper black curve is the $[M/H] = 1$ model with the TiO/VO reduced to solar. The dotted curve is the model with $[M/H] = 0.5$ and 2 π sr reradiation. Shown in dotted lines, hanging from above, are the sensitivity functions of the four IRAC bands and the MIPS 24 μm band.

TABLE 1
MODEL PLANET-TO-STAR FLUX DENSITY RATIOS IN *Spitzer* BANDS

Planet	Model	T_{eff} (K)	3.6 μm	4.5 μm	5.8 μm	8.0 μm	24 μm
HD 149026b	3 \times , 4 π	1736	0.24	0.30	0.37	0.45	0.68
HD 149026b	3 \times , 4 π , no clouds	1734	0.24	0.28	0.35	0.44	0.66
HD 149026b	3 \times , 2 π	2148	0.43	0.60	0.71	0.85	1.11
HD 149026b	10 \times , 4 π	2025	0.37	0.55	0.66	0.82	1.09
HD 149026b	10 \times (1 \times TiO), 4 π	1852	0.32	0.44	0.56	0.67	0.94
HD 189733b	1 \times , 4 π	1190	1.04	1.77	2.30	3.12	5.68
HD 189733b	3 \times , 4 π	1199	1.24	1.74	2.40	3.30	5.87
HD 189733b	10 \times , 4 π	1212	1.35	1.82	2.57	3.51	6.17

NOTES.—All ratios have been multiplied by 1000. Abundances and number of steradians for reradiation are given.

parent star, these ratios are typically $\sim 1/4$ to $1/2$ of those for TrES-1, assuming “4 π ” reradiation. Detection may be difficult. However, we show in § 2.5 that ratios from 3 to 5 μm for models with hot stratospheres are comparable to TrES-1. Deciding the best bands to search in will depend on the band-dependent photon-noise levels.⁶ Looking at IRAC specifically, while the planet is brightest at 8.0 μm , the instrument is more sensitive in the shorter wavelength bands. As TrES-1 seems to be redder than expected in the infrared (Fortney et al. 2005; Barman et al. 2005), we look forward to the comparison of models with the photometry in all four IRAC bands as those data become available.

2.4. Limb Darkening and Brightening

A diagnostic of the atmospheres of transiting planets is the variation in surface brightness of the planet’s disk, which is in principle observable during the secondary eclipse ingress and egress. Limb darkening is particularly interesting as it provides an empirical determination of the temperature profile of the atmosphere at optical depths less than unity. We have computed the planet’s limb darkening over the *Spitzer* bandpasses. Depending on the atmosphere model, both limb brightening and darkening can occur. Particularly, we find that limb brightening is a sensitive diagnostic of stratospheric heating, with a strong signature in the $[M/H] = 1$ model. Figure 5 plots the normalized specific intensity across the planetary disk for our cloudy $[M/H] = 0.5$ and the cloudless $[M/H] = 1$ models. We have used the transit code described in Hubbard et al. (2001) to compute ingress light curves for the limb-brightened and darkened planets. Unfortunately, the difference between these light curves is only $\sim 1\%$, so the effect is not detectable with *Spitzer* but probably within reach of the *James Webb Space Telescope*. Therefore, for the foreseeable future, IRAC photometry remains the best method to search for stratospheres in Pegasi planets.

2.5. Comparative Atmospheres: HD 189733b

Much of our understanding of Pegasi planet atmospheres will come from comparing and contrasting atmospheres within the class that may differ in the amount of stellar flux received or in atmospheric abundances. Here we briefly compare the atmosphere of HD 149026b, relative to HD 209458b, TrES-1, and HD 189733b, which was recently discovered by Bouchy et al. (2005).

Planet HD 189733b orbits an early main-sequence K star at 0.0313 AU. Although dubbed a “very hot Jupiter” due to its short orbital period of 2.219 days, because of the small stellar

luminosity ($\sim 0.34 L_{\odot}$) we find that its atmosphere is colder than HD 209458b and only marginally warmer than that of TrES-1. A comparison of our derived P - T profiles for HD 189733b and HD 149026b with other Pegasi planets is shown in Figure 6. For simplicity and for purposes of comparison, these profiles all assume solar metallicity and reradiation over 4π sr. As with TrES-1, it appears that Mg-silicate and iron clouds form too deep in the atmosphere of HD 189733b to affect its spectrum.

Similar to our findings for TrES-1 in Fortney et al. (2005), we find that CH_4 will be abundant in the atmosphere of HD 189733b, although CO is still be the major carbon carrier. As discussed in § 2.2 and Fortney et al. (2005), condensation curves and chemical boundaries are functions of the atmospheric metallicity. The specifics of CO and CH_4 abundances are discussed in detail in Lodders & Fegley (2002). If the atmosphere of HD 189733b is enhanced in heavy elements, then the atmospheric abundance of CH_4 will be significantly reduced, for the two following reasons. At higher metallicity, atmospheric opacity is higher, leading to greater absorption of stellar flux and a warmer atmosphere. This

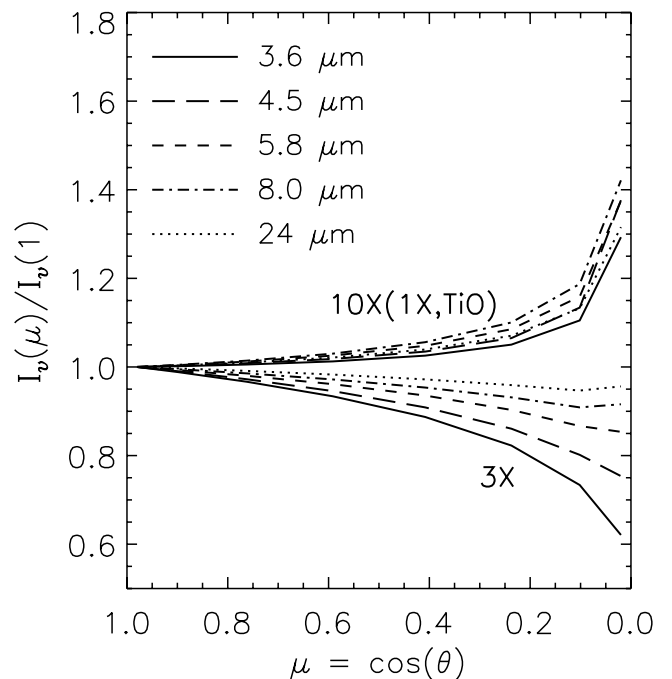


FIG. 5.—Limb-darkening profile for two atmosphere models of HD 149026b in five different *Spitzer* bandpasses. The “10 \times (1 \times ,TiO)” curves are for the $[M/H] = 1$ atmosphere models (with TiO and VO solar) with a hot stratosphere. The “3 \times ” curves are for the cloudy, $[M/H] = 0.5$ atmosphere models (see Fig. 2).

⁶ Discussions of *Spitzer* IRAC and MIPS sensitivities can be found at <http://ssc.spitzer.caltech.edu/irac/sens.html> and <http://ssc.spitzer.caltech.edu/mips/sens.html>, respectively.

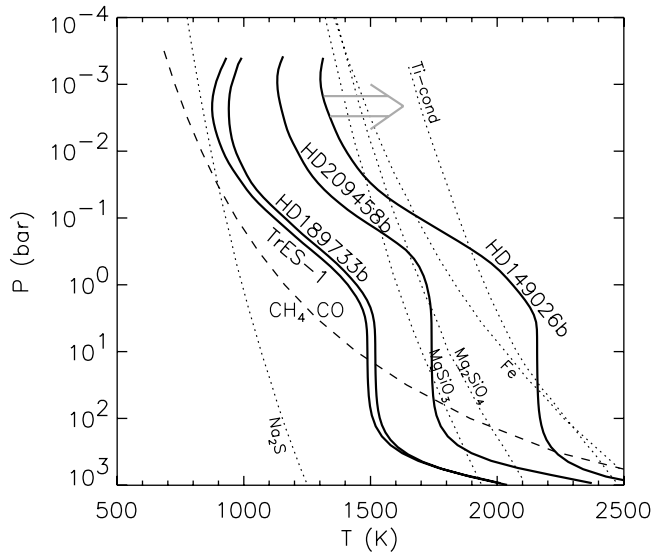


FIG. 6.—Atmospheric P - T profiles for planets TrES-1, HD 189733b, HD 209458b, and HD 149026b, from left to right. All profiles assume solar metallicity and reradiation of absorbed stellar flux uniformly over 4π sr. Condensation curves are labeled and are shown as dotted curves, and the boundary where CO and CH₄ have the same abundance is shown with the dashed curve. The gray arrow attached to the HD 149026b profile signifies that this is likely a lower limit to the stratospheric temperatures. All profiles assume $T_{\text{int}} = 100$ K.

favors CO over CH₄. In addition, the curve where CO and CH₄ have the same abundance moves to the left in Figure 6 as metallicity increases, toward lower temperatures at a given pressure. This again leads to a larger CO/CH₄ ratio. Dramatic effects on the infrared spectra can be seen in Figure 7. While methane absorption is strong in bands centered at 2.2, 3.3, and 7.8 μm in the $[M/H] = 0.0$ model, this absorption fades significantly at $[M/H] = 0.5$ and $[M/H] = 1.0$.

A low level of flux in the 3.6 μm IRAC band for HD 189733b or for TrES-1, due to methane absorption, would have significant implications for these planet's atmospheres. First, it would hint that these atmospheres do not have a significantly supersolar metallicity. Second, it would support our derived P - T profiles that assume extremely efficient redistribution of absorbed stellar flux onto the night side. In the limit that this redistribution only occurs over the illuminated hemisphere, the dayside would be ~ 200 –

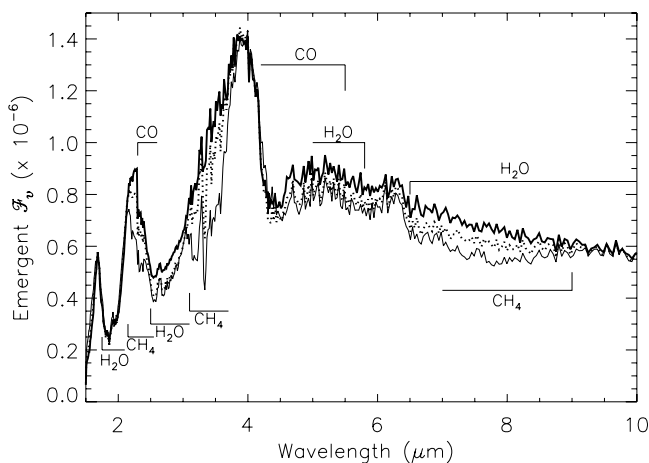


FIG. 7.—Emergent spectra of planet HD 189733b at three metallicities. The thin solid line is for $[M/H] = 0.0$. The dotted line is for $[M/H] = 0.5$. The thick line is for $[M/H] = 1.0$. Relevant absorption features are labeled. Absorption due to CH₄ is very sensitive to the atmospheric metallicity, especially from 3 to 4 μm .

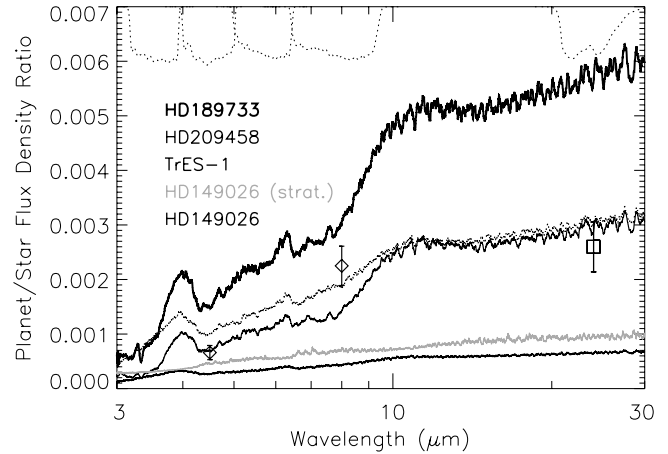


FIG. 8.—Planet-to-star flux density ratios for the four known transiting planets around bright stars. From top to bottom, HD 189733, HD 209458, TrES-1, HD 149026 with a stratosphere (gray), and HD 149026 without a stratosphere. All atmospheres assume $[M/H] = 0.0$ for simplicity, except the HD 149026b models, for which $[M/H] = 1.0$ (but solar TiO/VO), in gray, and $[M/H] = 0.5$. Data at 4.5 μm and 8 μm (diamonds) are for TrES-1 and the datum at 24 μm (square) is for HD 209458. 1σ error bars are shown.

250 K hotter (see Fig. 1 in Fortney et al. 2005 for TrES-1), and therefore only spectroscopically insignificant amounts of methane would be present. A detection of methane would seem to indicate that the atmosphere is efficient at dynamically redistributing energy onto the night side. A more detailed calculation would include the kinetics of the CO/CH₄ reaction. Work along these lines is currently underway for planet HD 209458b, which indicates that the CO/CH₄ is enhanced over equilibrium values and is nearly constant around the entire planet (Cooper & Showman 2005a).

Interestingly, the planet-to-star flux density ratios in the HD 189733 system should be much larger than in any other bright transiting system, since the stellar radius is only $0.76 \pm 0.01 R_{\odot}$ and the planetary radius is $1.26 R_J \pm 0.03 R_J$. The ratio of the cross-sectional areas (the measured quantity) is 2.9% (Bouchy et al. 2005). In Figure 8 we compare planet-to-star flux density ratios for HD 189733, HD 209458, TrES-1, and HD 149026. In general, the ratios for the HD 189733 system are twice those for HD 209458 and TrES-1. In Table 1 we collect our band-integrated planet-to-star flux density ratios in the *Spitzer* IRAC and MIPS bands. From 3 to 3.8 μm , and around 7.8 μm HD 189733b shows absorption due to CH₄, which is slightly weaker in strength than in TrES-1, due to the 50 K higher T_{eff} . From 3 to 3.8 μm , this band appears closer to saturation in TrES-1, as a wider absorption feature is seen. Strong CO absorption is seen near 4.5 μm , which is expected for all Pegasi planets. Much of the rest of the spectrum is carved by H₂O absorption, as shown in Figures 3 and 7. For HD 149026b, we can see that models with hot stratospheres may appear nearly as bright as TrES-1 in the 3.6 μm IRAC band.

3. EVOLUTION MODELS

3.1. Methods

We have generated a grid of atmospheres for the purpose of modeling the evolution of HD 149026b. This is a grid of cloudless atmospheres with $[M/H] = 0.5$ and TiO and VO removed at $P < 10$ bar. The stellar flux is diluted by a factor of 1/4, as described in § 2.1. As we predict that the silicate and iron clouds have a combined optical depth of ~ 0.1 , neglecting the clouds leads to a very slightly cooler P - T profile in the upper atmosphere, but

the structure of the deep atmosphere is essentially unchanged from the profile shown in Figure 2. We assume that the stellar luminosity is constant with time and that the planet has remained at 0.042 AU for all times. We have calculated atmosphere models at 12 values of T_{int} and three gravities that cover the parameters of planet HD 149026b for ages between $\sim 10^6$ to 5×10^9 yr. Even at very young ages (< 10 Myr), when the planet has an appreciable internal energy source, the incident flux dominates the planet's intrinsic flux, and T_{eff} is only 30 K higher than T_{eq} .

Our evolution code for the calculation of the cooling and contraction of adiabatic giant planets is well tested. It has been used to produce evolutionary models of Jupiter and Saturn (Fortney & Hubbard 2003) and cool EGP's (Fortney & Hubbard 2004), and it is described in detail in Fortney & Hubbard (2003) and Fortney (2004). No modifications to the code were needed to calculate the evolution and contraction of Pegasi planets. The radiative atmosphere that serves as the bottleneck for cooling above the adiabatic H/He envelope is automatically accounted for with our fully nongray, self-consistent model atmosphere grid. The importance of using detailed atmosphere models for evolutionary calculations of Pegasi planets is discussed in Baraffe et al. (2003). The heat extracted from the planet's interior per unit mass is given by

$$\frac{\partial L}{\partial m} = -T \frac{\partial S}{\partial t}, \quad (1)$$

where L is the planet's intrinsic luminosity, T is the temperature of a mass shell, S is the specific entropy of a mass shell, and t is the time. In practice, a set of structural models of decreasing internal heat content determine T and S , and the model atmosphere grid allows for the derivation of L given S from a structural model. One can then solve for the time step t .

For the equation of state (EOS) of the H/He envelope we use the Saumon et al. (1995) EOS with a helium mass fraction $Y = 0.27$. In order to include heavy elements accurately, we use the ANEOS zero-temperature EOSs (Thompson 1990) of water (for generic ices, which is predominantly water) and olivine (for generic "rocks"). Zero-temperature EOSs are suitable for these constituents, as the thermal contribution to the pressure for ices in our density/temperature range is on the order of 10%–20% (Hubbard & Macfarlane 1980) and is considerably lower for rock. Later we show that this has little effect on our derived core mass. The use of a zero-temperature EOS implies that we ignore the heat content of the core on the thermal evolution of the planet. This is often done for evolutionary models of Jupiter and Saturn (Hubbard 1977; Saumon et al. 1992; Fortney & Hubbard 2003), as the error involved is small compared to other unknowns, such as the temperature of the H/He envelope at Megabar pressures (Saumon & Guillot 2004) and the radiative properties of the planets' atmospheres. At first glance, this may seem a gross simplification for HD 149026b, where the heavy elements may constitute 2/3 of the planet's mass. However, as noted in Hubbard (1978) in regard to the cooling of Uranus and Neptune, if the electrons in the interior of a planet are degenerate, then the specific heat at constant volume is determined by the ions only. Therefore, the heat capacity of a species is inversely proportional to its molecular weight, meaning the heat content of the ices is ~ 0.1 that of H, and for rocks this ratio is only a few hundredths.

Modeling the heat content of the core would require a knowledge of the mechanism of energy transport within the core. If energy were transported by convection, the temperature gradient would be close to an adiabat, but if conduction is the dominant mechanism, the core could be close to isothermal. Furthermore,

interior composition gradients can inhibit convection and result in steep superadiabatic temperature gradients, as may be the case for Uranus and Neptune. Adiabatic models for Uranus and Neptune overestimate the current luminosity of both planets (Podolak et al. 1991), supporting such a possibility.

It should be remembered that compared to Jupiter and Saturn, relatively little is understood about the interiors of Uranus and Neptune. Our understanding of Jupiter and Saturn forms a solid basis for modeling the structure of extrasolar *gas* giants, but the same cannot be said about extrasolar *ice* giants. (For an in-depth discussion of the structure and cooling history of the solar system's ice giants, see the excellent reviews by Podolak et al. [1991] and Hubbard et al. [1995].) Given the considerable uncertainties in modeling the interior structure of a planet for which only the mass and radius are known, we believe that the EOSs and treatment we have chosen here are quite acceptable.

We also neglect the "transit radius" effect: The apparent radius of a transiting planet is the radius where the slant optical depth through the planet's atmosphere reaches unity. The corresponding atmospheric pressure can vary across many orders of magnitude, depending on the wavelength (Hubbard et al. 2001; Fortney et al. 2003). Burrows et al. (2003) and Baraffe et al. (2003) have estimated this effect to be $\sim 10\%$ and 5% respectively, for HD 209458b, compared to some reference radius, such as the radiative-convective boundary or the 1 bar level. However, the transit radius effect is considerably smaller for HD 149026b because of its higher gravity (1700 cm s^{-2}) and the broad photometric bandpasses used by Sato et al. (2005). Furthermore, the reported error on the radius of HD 149026b is $\pm 3.5\%$, larger than the expected transit radius effect.

In their discovery paper, Sato et al. (2005) used planet modeling techniques described in Bodenheimer et al. (2003) to model the contraction history and current structure of HD 149026b. They modeled the planet as a solar composition H/He envelope on top of a uniform density core of either 5.5 g cm^{-3} (for ices) or 10.5 g cm^{-3} (for rocks). They also implicitly ignore the heat content of the core. Constant density models ignore the actual high-pressure equation of state that could potentially lead to errors in the determination of the core mass. However, as we see below, our estimates for the total heavy element abundances, using detailed nongray atmosphere models and advanced equations of state for ice and rock, essentially confirm the preliminary findings of Sato et al. (2005).

3.2. Internal Structure and Composition

We take a straightforward look at possible interior models of HD 149026b. Since we have used $[M/H] = 0.5$ for the model atmosphere grid, we also assume that the H/He envelope down to the core is similarly enhanced in heavy elements. We use our ice EOS to mix in $Z = 0.045$ into the pressure-density relation of the H/He envelope, using the additive volume rule,

$$\frac{1}{\rho} = \frac{1-Z}{\rho_{\text{H/He}}} + \frac{Z}{\rho_{\text{ice}}}. \quad (2)$$

We assume that the core is made either entirely of rock or ice. We use a planet mass of $0.36M_J$ but vary the current age of the planet between 1.2 and 2.8 Gyr (Sato et al. 2005). Most importantly, for the planet's radius we use the 1σ error bars from Charbonneau et al. (2006), which are somewhat larger than those of Sato et al. (2005). The largest amount of heavy elements will be needed for a young planet with a radius at the bottom of the error bar with a core composed of ice. The smallest amount of heavy elements

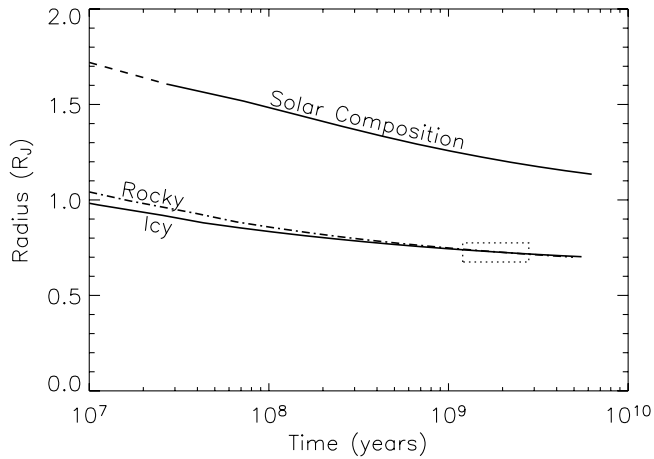


FIG. 9.—Radii of HD 149026b planet models. A planet model of solar composition is shown for comparison purposes. The two models that match the observed radius at 2 Gyr include a H/He envelope with $Z = 0.045$, approximately 3 times the solar metallicity, which matches the atmosphere model. The “Rocky” model includes a core of $65.5 M_{\oplus}$ of olivine, while the “Icy” model includes a core of $77 M_{\oplus}$ of ice. The age/radius error box is from Sato et al. (2005). The dashed portion of the solar composition model indicates where the planet was off the atmosphere grid due to low gravity.

will be needed for an older planet with a radius at the top of error bar with a core composed of rock. We find that a range of core masses from 59 and $92 M_{\oplus}$ fall within these bounds. If the age is locked at 2 Gyr and the radius at the value at the center of the error bars ($0.726 R_p$), these estimates change to $66 M_{\oplus}$ (for rock) and $79 M_{\oplus}$ (for ice). Including the $\sim 1\text{--}2.5 M_{\oplus}$ of heavy elements in the envelope ($Z = 0.045$), we derive a total mass of heavy elements for the most disparate models of 61.5 and $93 M_{\oplus}$, which are 54% and 82% of the planet’s mass, respectively. The contraction of the radius of two planet models are shown in Figure 9. The radius of a solar composition planet (with the same atmosphere) would be 63% larger.

As a check on these results, we also investigated the contraction of HD 149026b with an alternative “rock” and “ice” EOS, which are given in Hubbard & Marley (1989). These EOSs are polynomial fits to high-pressure EOSs given in Zharkov & Trubitsyn (1978). “Rock” is a mixture of 38% SiO_2 , 25% MgO , 25% FeS , and 12% FeO . This material is slightly denser at high pressure than our ANEOS rock EOS, leading to a total heavy element mass smaller by $\sim 1 M_{\oplus}$. “Ice” here is a mixture of 56.5% H_2O , 32.5% CH_4 , and 11% NH_3 at temperatures of $\sim 10^4$ K. Again we find a total heavy element mass smaller by $1 M_{\oplus}$. Our conclusions regarding heavy elements remain essentially unchanged despite using a different composition for the rock and a nonzero temperature EOS for the ice mixture.

The evolution models show that the interior of HD 149026b has cooled significantly, which is not surprising given the relatively small percentage of its mass contributed by H/He. We find that values of T_{int} from 80 to 105 K are realistic for the current intrinsic heat flux of the planet. For comparison, the T_{int} for our solar system’s giant planets are 99 K for Jupiter, 77 K for Saturn, 53 K for Neptune, and < 35 K (1σ upper limit) for Uranus (Pearl & Conrath 1991). The T_{int} for HD 209458b may be as high as 300 K, in order to match the planet’s current radius (Guillot & Showman 2002; Baraffe et al. 2003). We also note that if observations show that the planet does indeed have a hot stratosphere, it may be necessary to revisit these evolutionary calculations. If stellar flux is absorbed very high in the planet’s atmosphere, this will lessen somewhat the effect that stellar irradiation has on retarding the contraction of the planet (Guillot & Showman 2002).

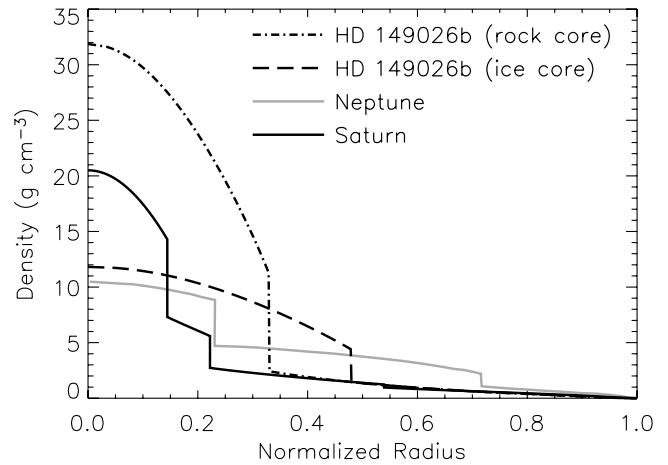


FIG. 10.—Interior density as a function of normalized radius for two possible models for HD 149026b compared with Neptune and Saturn. All planet models have been normalized to the radius at which $P = 1$ bar. The Neptune profile is from Podolak et al. (1995), and the Saturn profile is from Guillot (1999). The Saturn and Neptune models have a layer of ice overlying a central rocky core. The two profiles of HD 149026b assume that $[M/H] = 0.5$ in the H/He envelope and a core made entirely of either ice or rock.

3.3. Comparative Interior Structure

Figure 10 shows the current interior density distribution as a function of normalized radius for our two models from Figure 9 compared to interior models of Saturn (Guillot 1999) and Neptune (Podolak et al. 1995). The Saturn and Neptune models both have two-layer cores of rock overlaid by ice. The ratio of ice to rock in these cores is based more on cosmogonical arguments than on physical evidence. The interior structure of HD 149026b may be a hybrid of the ice giants and gas giants. Uranus and Neptune are $\sim 90\%$ heavy elements, while Saturn is $\sim 25\%$ and Jupiter $\leq 10\%$ (Saumon & Guillot 2004). Although HD 149026b is more massive than Saturn, it has a bulk percentage of heavy elements (50%–80%) more similar to that of the solar system’s ice giants.

For the models in Figure 10 we find that the central pressure for the planet with the ice core is 72 Mbar, while with the rock core it is 240 Mbar. At the bottom of the H/He envelope the pressure is 5.6 Mbar in the model with an ice core and 16 Mbar in the model with a rock core. Under these conditions, hydrogen is expected to be compressed into a liquid metallic state. The possibility of a relatively thin liquid metallic hydrogen layer overlying a deeper region of fluid ionic ices could lead to an interesting new regime of planetary magnetic fields. Convecting fluid ices overlying nonconvective regions may be responsible for the complex magnetic fields of Uranus and Neptune (Podolak et al. 1991; Hubbard et al. 1995; Stanley & Bloxham 2004). The geometry of the convective region of a planet’s interior may well be an important factor in determining the morphology of a planet’s magnetic field (Stanley & Bloxham 2004).

3.4. Composition and the Radii of Pegasi Planets

The radii of Pegasi planets are influenced by a number of factors. These include the age of the planet, the magnitude of the stellar flux incident on the planet, the opacity of the atmosphere (which regulates interior cooling), the time delay between formation and the end of migration, and the interior heavy element abundances in the H/He envelope and core. The discovery of HD 149026b has shown us that interior heavy element abundances of Pegasi planets may be quite different than that of Jupiter

and Saturn. Guillot (2005) points out that for Pegasi planets in general, the orbital velocity (v_{orb}) of $\sim 150 \text{ km s}^{-1}$ is much larger than the planet's escape velocity (v_{esc}) of $\sim 50 \text{ km s}^{-1}$. As discussed in Guillot & Gladman (2000), this means a Pegasi planet will be relatively inefficient at scattering planetesimals near its orbit, and relatively efficient at capturing them, compared to Jupiter. Jupiter, at its current mass and location, has $v_{\text{orb}} < v_{\text{esc}}$ and is efficient at removing planetesimals from the solar system. Thus, Pegasi planets may accumulate more heavy elements than has been previously appreciated (Guillot 2005). HD 149026b may be toward the high-accumulation end of a continuum for Pegasi planets, possibly due to the high metallicity in the stellar system it occupies.

This leads us to consider the bulk content of heavy elements of the other transiting planets. HD 209458b is the only known transiting planet with a large radius that is difficult to model, although OGLE-TR-10b may be in this class (Konacki et al. 2005; Baraffe et al. 2005). This has suggested to many that this *one* planet harbors an additional energy source that slows its contraction (Bodenheimer et al. 2001; Guillot & Showman 2002; Baraffe et al. 2003; Winn & Holman 2005). The discovery of HD 149026b suggests another possibility. It is conceivable that *all* Pegasi planets are affected by an additional energy source (yet to be definitively identified) as they all share similar environments. An internal energy source would normally tend to lead to larger planetary radii, but this could be partly compensated by a relatively large bulk heavy element abundance in these planets, thanks to favorable conditions for planetesimal accretion.

In this perspective, HD 209458b and OGLE-TR-10b would represent the low end of the metallicity range of the Pegasi planets, leading to relatively large radii. HD 149026b would fall at the high-metallicity end of this range, leading to its small radius. Given Jupiter and Saturn's large bulk inventory of heavy elements—as much as 6 and 14 times solar, respectively (Saumon & Guillot 2004)—and the fact that most calculations on the radii of transiting planets have assumed metallicities lower than that of Jupiter (e.g., Chabrier et al. 2004; Burrows et al. 2004; Guillot 2005; Baraffe et al. 2005), this scenario is quite plausible.⁷ A similar argument was made by Guillot (2005). The detection of additional transiting planets with similar orbital characteristics but with a continued wide spread in radius would support this view. In tentative support of this picture, Fortney et al. (2005) found that the match to the Charbonneau et al. (2005) *Spitzer* photometry for the transiting planet TrES-1 improved as the metallicity of the model atmosphere was increased. It is tempting to look for trends in the metallicity of the transiting planet host stars as a hint to potential core sizes in these planets, given the supersolar abundances of HD 149026. However, stars HD 209458, OGLE-TR-10, and TrES-1 are all consistent with solar abundances (Brown 2001; Konacki et al. 2005; Sozzetti et al. 2004), although the planet radii differ by $\sim 0.3R_J$ at similar planetary masses. Planetary formation details surely complicate this picture, but perhaps as more planets are found a rough trend will emerge.

⁷ Bodenheimer et al. (2003) and Laughlin et al. (2005) have computed evolution models with $40 M_{\oplus}$ cores for planets more massive than $1M_J$.

4. CONCLUSIONS

We have investigated aspects of the atmosphere, interior, and evolution of the new transiting planet HD 149026b. If the determination of the planet's radius withstands additional scrutiny, then this planet is unlike any other found to date. We confirm that HD 149026b is a Pegasi planet composed of 50%–80% heavy elements. We note that if we had included the transit radius effect, equations of state for ices and rocks that included the additional thermal energy component, or an additional internal energy source, the planet would need to be even more enriched in heavy elements to match its current radius.

Although we calculated models with up to 10 times the solar metallicity, the possibility exists that the atmosphere could be even more enriched in heavy elements. For example, the atmospheres of Uranus and Neptune are enriched in carbon (in the form of CH_4) by factors of ~ 30 over the solar value (Gautier & Owen 1989). Given our trends from $[\text{M}/\text{H}] = 0.0$ to 1.0 , a greater metallicity enhancement would lead to a warmer atmosphere that would be even more likely to have a hot stratosphere. If the planet was able to accrete significant amounts of planetesimals into its proto-atmosphere in this metal-rich environment, it could contain more heavy elements in its H/He envelope and less in its core than we have presumed, although the effects on the radius would be similar. A signature of this history would be an extremely metal-rich atmosphere.

Detection of HD 149026b with *Spitzer* may prove challenging, given that the planet-to-star flux density ratios we predict here are smaller than those for TrES-1. However, the $8.0 \mu\text{m}$ flux observed from TrES-1 is larger than our models predict, and if this is also the case for HD 209458b, then the case for observing HD 149026b will be strengthened. The atmosphere of HD 149026b is likely to be highly enriched in heavy elements, in which case it could have a stratosphere that may be detected by its strong emission from 4 to $10 \mu\text{m}$. If a hot stratosphere exists, the planet may be nearly as bright as TrES-1 in the IRAC $3.6 \mu\text{m}$ band.

While the stars HD 209458 and HD 189733 have a metallicity close to solar (Mazeh et al. 2000; Bouchy et al. 2005), their transiting planets may nevertheless have hot stratospheres, perhaps driven by absorption by photochemically derived species. Additional *Spitzer* IRAC data should help show us the shape of the infrared spectrum from 3 to $10 \mu\text{m}$. Because their parent stars are bright and these systems have favorable planet-to-star flux ratios, they are promising targets to search for an extrasolar stratosphere. As every object in our solar system with an appreciable atmosphere exhibits a hot stratosphere, save possibly Venus, finding a stratosphere on some or all Pegasi planets would open an exciting new area of comparative planetary atmospheres.

We thank Greg Laughlin for sharing data in advance of publication and David Charbonneau for discussions about the IRAC detectors. A review by Tristan Guillot has improved the paper. We acknowledge support from an NRC postdoctoral fellowship (J. J. F.), NASA grants NAG2-6007 and NAG5-8919 (M. S. M.), and NSF grant AST 04-06963 (K. L.). This work was supported in part by the US Department of Energy under contract W-7405-ENG-36.

REFERENCES

- Ackerman, A. S., & Marley, M. S. 2001, *ApJ*, 556, 872
 Baraffe, I., Chabrier, G., Barman, T. S., Allard, F., & Hauschildt, P. H. 2003, *A&A*, 402, 701
 Baraffe, I., Chabrier, G., Barman, T. S., Selsis, F., Allard, F., & Hauschildt, P. H. 2005, *A&A*, 436, L47
 Barman, T. S., Hauschildt, P. H., & Allard, F. 2005, *ApJ*, 632, 1132
 Bodenheimer, P., Laughlin, G., & Lin, D. N. C. 2003, *ApJ*, 592, 555
 Bodenheimer, P., Lin, D. N. C., & Mardling, R. A. 2001, *ApJ*, 548, 466
 Bouchy, F., et al. 2005, *A&A*, 444, L15
 Brown, T. M. 2001, *ApJ*, 553, 1006

- Burrows, A., Hubeny, I., Hubbard, W. B., Sudarsky, D., & Fortney, J. J. 2004, *ApJ*, 610, L53
- Burrows, A., Hubeny, I., & Sudarsky, D. 2005, *ApJ*, 625, L135
- Burrows, A., Marley, M. S., & Sharp, C. M. 2000, *ApJ*, 531, 438
- Burrows, A., Sudarsky, D., & Hubbard, W. B. 2003, *ApJ*, 594, 545
- Burrows, A., et al. 1997, *ApJ*, 491, 856
- Chabrier, G., Barman, T., Baraffe, I., Allard, F., & Hauschildt, P. H. 2004, *ApJ*, 603, L53
- Charbonneau, D., et al. 2005, *ApJ*, 626, 523
- . 2006, *ApJ*, 636, 445
- Cooper, C. S., & Showman, A. P. 2005a, *BAAS*, 37, 28.03
- . 2005b, *ApJ*, 629, L45
- Deming, D., Seager, S., Richardson, L. J., & Harrington, J. 2005, *Nature*, 434, 740
- Fegley, B. J., & Lodders, K. 1994, *Icarus*, 110, 117
- Fischer, D. A., & Valenti, J. 2005, *ApJ*, 622, 1102
- Fortney, J. J. 2004, Ph.D. thesis, Univ. Arizona
- Fortney, J. J., & Hubbard, W. B. 2003, *Icarus*, 164, 228
- . 2004, *ApJ*, 608, 1039
- Fortney, J. J., Marley, M. S., Lodders, K., Saumon, D., & Freedman, R. 2005, *ApJ*, 627, L69
- Fortney, J. J., Sudarsky, D., Hubeny, I., Cooper, C. S., Hubbard, W. B., Burrows, A., & Lunine, J. I. 2003, *ApJ*, 589, 615
- Gautier, D., & Owen, T. 1989, in *Origin and Evolution of Planetary and Satellite Atmospheres*, ed. S. K. Ateya, J. B. Pollack, & M. S. Matthews (Tucson: Univ. Arizona Press), 487
- Gonzalez, G. 1997, *MNRAS*, 285, 403
- Guillot, T. 1999, *Planet. Space Sci.*, 47, 1183
- . 2005, *Annu. Rev. Earth Planet. Sci.*, 33, 493
- Guillot, T., Burrows, A., Hubbard, W. B., Lunine, J. I., & Saumon, D. 1996, *ApJ*, 459, L35
- Guillot, T., & Gladman, B. 2000, in *ASP Conf. Ser. 219: Disks, Planetesimals, and Planets*, ed. F. Garzon et al. (San Francisco: ASP), 475
- Guillot, T., & Showman, A. P. 2002, *A&A*, 385, 156
- Hubbard, W. B. 1977, *Icarus*, 30, 305
- . 1978, *Icarus*, 35, 177
- Hubbard, W. B., Fortney, J. J., Lunine, J. I., Burrows, A., Sudarsky, D., & Pinto, P. 2001, *ApJ*, 560, 413
- Hubbard, W. B., & Macfarlane, J. J. 1980, *J. Geophys. Res.*, 85, 225
- Hubbard, W. B., & Marley, M. S. 1989, *Icarus*, 78, 102
- Hubbard, W. B., Podolak, M., & Stevenson, D. J. 1995, in *Neptune and Triton*, ed. D. P. Kruikshank (Tucson: Univ. Arizona Press), 109
- Hubeny, I., Burrows, A., & Sudarsky, D. 2003, *ApJ*, 594, 1011
- Iro, N., Bezdard, B., & Guillot, T. 2005, *A&A*, 436, 719
- Konacki, M., Torres, G., Sasselov, D. D., & Jha, S. 2005, *ApJ*, 624, 372
- Kurucz, R. 1993, CD-ROM 13, *ATLAS9 Stellar Atmosphere Programs and 2 km/s Grid* (Cambridge: SAO)
- Laughlin, G., Wolf, A., Vanmunster, T., Bodenheimer, P., Fischer, D., Marcy, G., Butler, P., & Vogt, S. 2005, *ApJ*, 621, 1072
- Lodders, K. 2002, *ApJ*, 577, 974
- . 2003, *ApJ*, 591, 1220
- Lodders, K., & Fegley, B. 2002, *Icarus*, 155, 393
- . 2006, *Astrophysics Update*, in press
- Marley, M. S. 1998, in *ASP Conf. Ser. 134, Brown Dwarfs and Extrasolar Planets*, ed. R. Rebolo, E. L. Martin, & M. R. Zapatero Osorio (San Francisco: ASP), 383
- Marley, M. S., & McKay, C. P. 1999, *Icarus*, 138, 268
- Marley, M. S., Saumon, D., Guillot, T., Freedman, R. S., Hubbard, W. B., Burrows, A., & Lunine, J. I. 1996, *Science*, 272, 1919
- Marley, M. S., Seager, S., Saumon, D., Lodders, K., Ackerman, A. S., Freedman, R. S., & Fan, X. 2002, *ApJ*, 568, 335
- Mazeh, T., et al. 2000, *ApJ*, 532, L55
- McKay, C. P., Pollack, J. B., & Courtin, R. 1989, *Icarus*, 80, 23
- Pearl, J. C., & Conrath, B. J. 1991, *J. Geophys. Res.*, 96, 18921
- Podolak, M., Hubbard, W. B., & Stevenson, D. J. 1991, in *Uranus*, ed. J. T. Bergstrahl, E. D. Miner, & M. S. Matthews (Tucson: Univ. Arizona Press), 29
- Podolak, M., Weizman, A., & Marley, M. 1995, *Planet. Space Sci.*, 43, 1517
- Pont, F., Bouchy, F., Queloz, D., Santos, N. C., Melo, C., Mayor, M., & Udry, S. 2004, *A&A*, 426, L15
- Santos, N. C., Israelian, G., & Mayor, M. 2004, *A&A*, 415, 1153
- Sato, B., et al. 2005, *ApJ*, 633, 465
- Saumon, D., Chabrier, G., & van Horn, H. M. 1995, *ApJS*, 99, 713
- Saumon, D., & Guillot, T. 2004, *ApJ*, 609, 1170
- Saumon, D., Hubbard, W. B., Chabrier, G., & van Horn, H. M. 1992, *ApJ*, 391, 827
- Seager, S., Richardson, L. J., Hansen, B. M. S., Menou, K., Cho, J. Y.-K., & Deming, D. 2005, *ApJ*, 632, 1122
- Showman, A. P., & Guillot, T. 2002, *A&A*, 385, 166
- Sozzetti, A., et al. 2004, *ApJ*, 616, L167
- Stanley, S., & Bloxham, J. 2004, *Nature*, 428, 151
- Thompson, S. L. 1990, *ANEOS—Analytic Equations of State for Shock Physics Codes*, Sandia Natl. Lab. Doc. SAND89-2951
- Toon, O. B., McKay, C. P., Ackerman, T. P., & Santhanam, K. 1989, *J. Geophys. Res.*, 94, 16287
- Visscher, C., & Fegley, B. J. 2005, *ApJ*, submitted (astro-ph/0511136)
- Winn, J. N., & Holman, M. J. 2005, *ApJ*, 628, L159
- Zharkov, V. N., & Trubitsyn, V. P. 1978, *Physics of Planetary Interiors* (Tucson: Pachart)